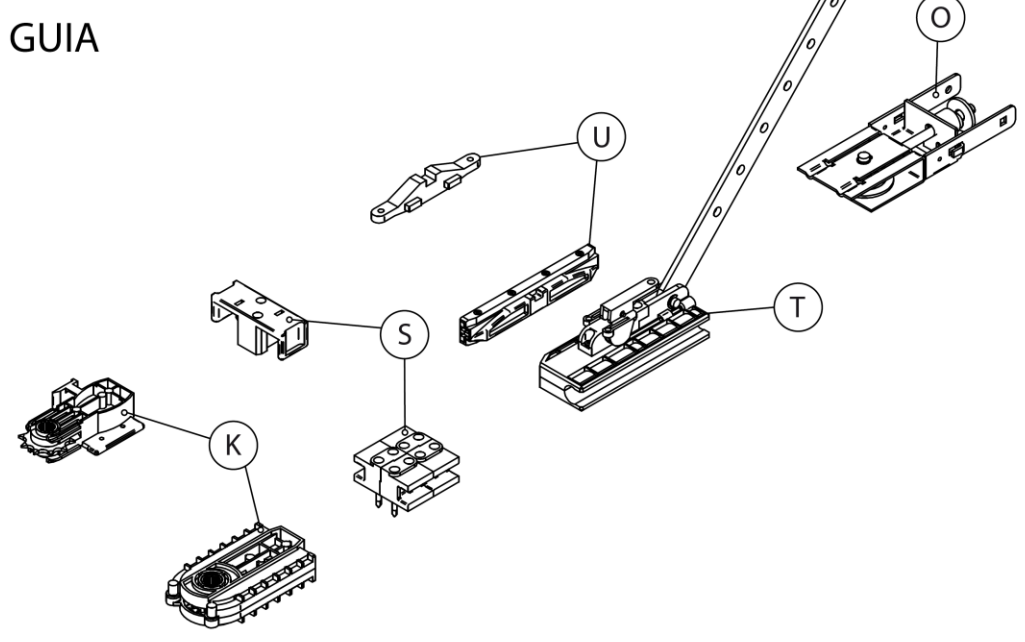
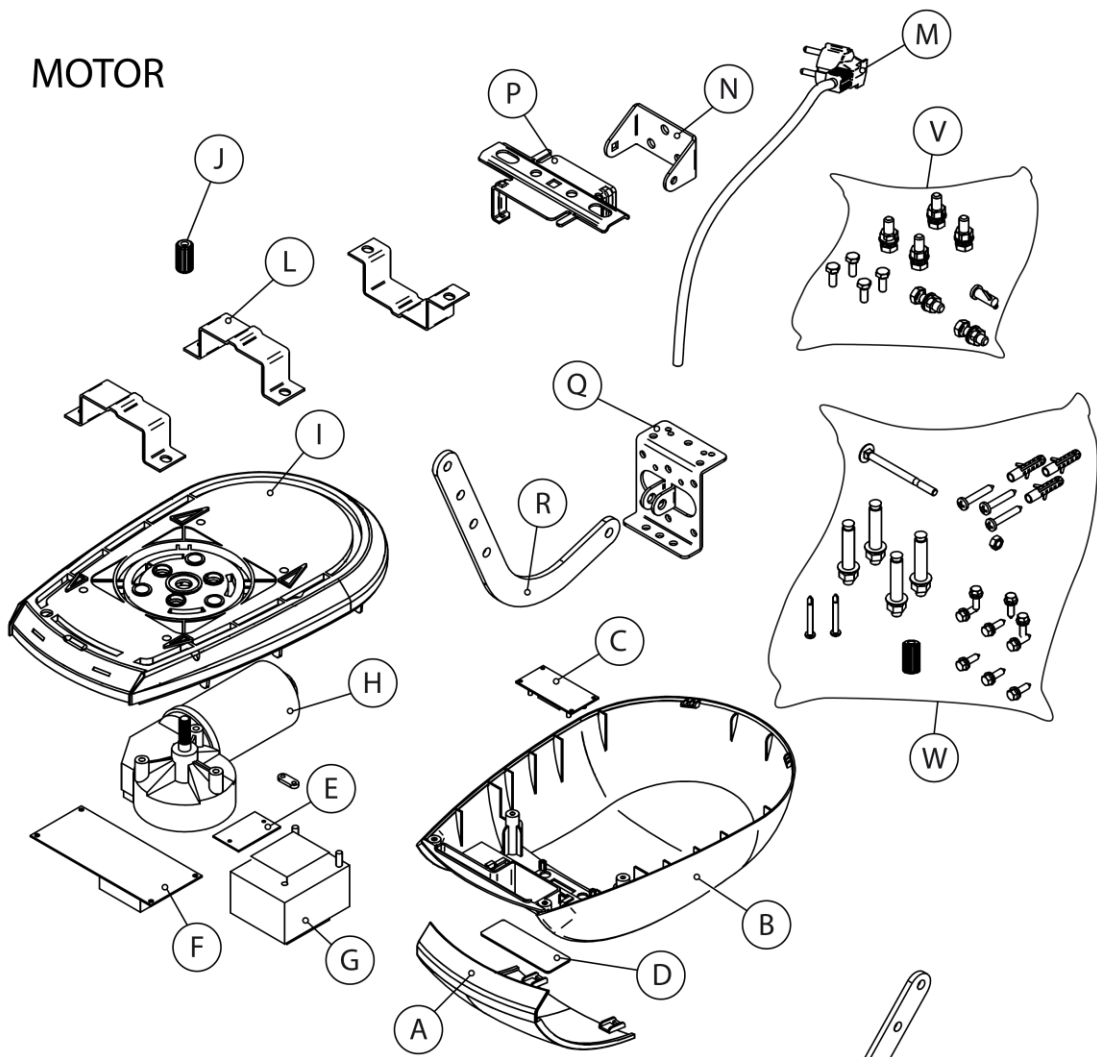


LISTA DE REPUESTOS / SPARE PARTS LIST



LISTA DE REPUESTOS / SPARE PARTS LIST

MOTOR

		NASR70E	NASR100E	NASR100EM
A	TAPA LEDS / <i>led's cover</i>	170227		
B	CARCASA / <i>plastic housing</i>	170226		
C	CIRCUITO DISPLAY / <i>display board</i>	13B161		
D	CIRCUITO LEDS / <i>led's board</i>	13B159		
E	CIRCUITO POTENCIA / <i>power board</i>	13B160		13B162
F	CUADRO MANIOBRA / <i>control board</i>	65-APNASR724		
G	TRANSFORMADOR / <i>transformer</i>	170232	170231	170268
H	MOTOR / <i>motor</i>	170230	170229	170337
I	BASE / <i>base</i>	170225		
J	CASQUILLO ADAPTACION / <i>gearmotor shaft adaptor</i>	170235		
L	BRIDA AMARRE GUIA / <i>rail fixing bracket</i>	170234		
M	CABLE CON ENCHUFE / <i>cable with plug</i>	170292		
N	SOPORTE PARED / <i>rail fixing bracket to the wall</i>	170241		
P	SOPORTE INTERMEDIO GUIA / <i>intermediate rail fixing bracket</i>	170242		
Q	SOPORTE PUERTA / <i>arm fixing bracket to the door</i>	170244		
R	BRAZO CURVO GUIA / <i>curved arm</i>	170265		
S	TOPE MECANICO / <i>stopper</i>	170215		
T	CARRO DE ARRASTRE / <i>carriage</i>	170257		
V	TORNILLOS FIJACION ACCIONAR GUIA / <i>motor-rail fixing bolts bag</i>	170294		
W	TORNILLOS FIJACION PUERTA-PARED-TECHO / <i>door-wall-roof fixing bolts</i>	170295		
X	ENCODER / <i>encoder</i>	170343	170266	

GUIA

		CADENA / Chain			CORREA / Belt	
		ANA01 (3,3m- 3 p.) / ANA10 (3,3m- 2 p.)	ANA11 (4m- 2 p.)	ANA02 (4,4m- 4 p.)	ANA03 (3,3m- 3 p.)	ANA04 (4,4m- 4 p.)
K	CONJUNTO PIÑON / <i>motor-drive rail sprocket</i>	170258			170548	
O	CONJUNTO TENSOR / <i>pulley-tightener assembly</i>	170256			170545	
S	TOPE MECANICO / <i>stopper</i>	170215			170341	
T	CARRO DE ARRASTRE / <i>carriage</i>	170257			170546	
U	ENGANCHE / <i>connector</i>	170216			170547	