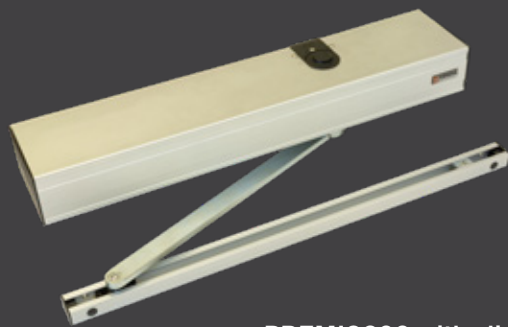




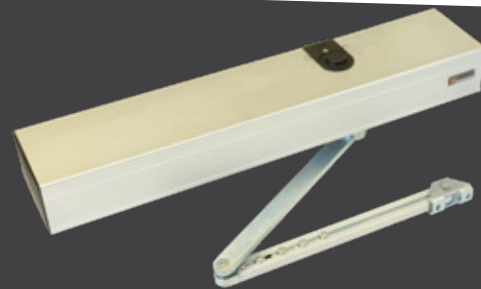
Premis

OPERATOR FOR

AUTOMATIC SWING DOORS



PREMIS200 with sliding arm



PREMIS200 with articulated arm

The **PREMIS200** is an electromechanical operator for swing doors with leaf width up to 1400mm or a maximum weight of 400kg.

A compact unit (75mm height) with a sturdy construction, made by a compression spring, a bevel gearbox, a Dunker motor and the control board.

Designed for intensive use of any type of entrances: private, public, doors for people with disabilities, double or single doors, and reduced spaces.

Its multiple operating modes (automatic, door open, door closed, one direction, partial opening on double swing leaf, manual mode) and a wide range of functions adapt to any type of need (courtesy, push&go, servo assisted, toilet access and so on)

Robust: Mechanism with a bevel gear reducer capable of working in both directions of rotation and a built-in compression spring.

Safety: Designed in compliance with the safety standards EN16005

Durability: 500.000 cycles tested

Movement: Silent and dynamic movement on opening and on closing

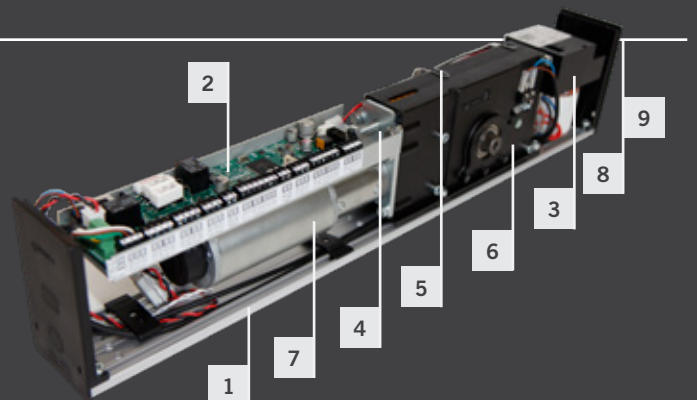
Installation: Easy and quick

Use: Intensive

Encoder: Precise control of the door positioning

The PREMIS operator includes:

- 1 Support profile
- 2 Control board
- 3 Power supply
- 4 Spring force adjustment
- 5 Limit microswitch
- 6 Gear reducer
- 7 Gear motor
- 8 Side switch (working modes)
- 9 Side reset button

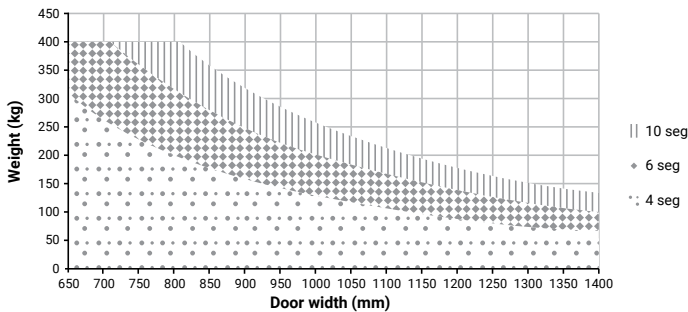


OTHER ADVANTAGES

- **Dimension:** Reduced dimension: 644 x 75 x 138mm (LxHxD).
- **Motor:** Permanent magnet motor of 40Vdc.
- **Controller:** Closed loop PID control which allows a precise movement control. It monitors the motor intensity & temperature and the safety sensors.
Motor force control system with obstacle detection for users' safety.
- **Working modes:** Switch on one side selecting automatic, manual, door open, door closed.
- **Configuration:** Full energy or low energy.
- **Functions:** Push & Go, fire door, accessible toilets, courtesy opening for people with disabilities, emergency stop, emergency locking, hold open, double leaves, electric and magnetic locks, interlock between two doors, obstacle detection, and so on.

TECHNICAL FEATURES

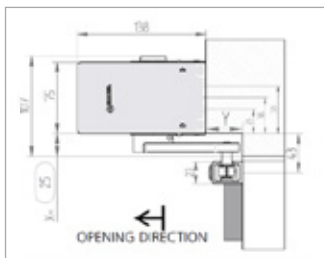
| | PREMIS200 |
|---------------------------|--|
| Maximal door leaf height | 3000mm |
| Opening speed (Min-Max) | adjustable 3 - 10 seconds |
| Closing speed (Min-Max) | adjustable 5 - 10 seconds |
| Power supply | 230V - 50/60Hz |
| Motor power supply | 40V |
| Maximum torque | 50Nm |
| Maximum opening angle | Adjustable from 0-100° (with mechanical stopper) |
| Maximum leaf weight/width | See chart below (according to speeds) |



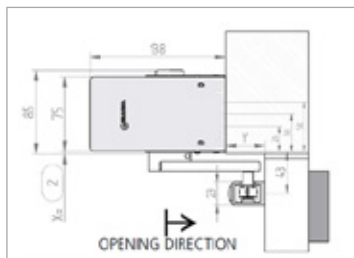
| | |
|-------------------------------|---------------------------------|
| Weight (Operator without arm) | 6,6kg |
| Cover material | Aluminium |
| Relative humidity | 10% to 90% without condensation |
| Operating temperature | - 20°C / +50°C |
| Use | Intensive |
| Protection class | IP52 |

INSTALLATION DRAWINGS

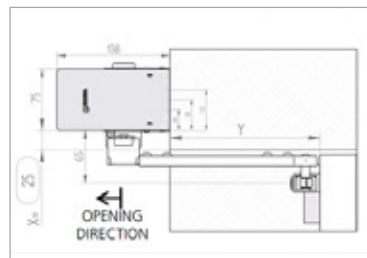
Pull slide arm APR01, Operator on the lintel (hinges side)



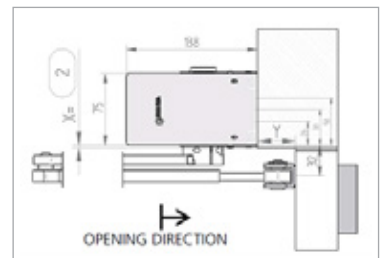
Pull slide arm APR01, Operator on the lintel (opposite the hinges side)



Push slide arm APR09 extension, Operator on the lintel (hinges side)



Push articulated arm APR02, Operator on the lintel (opposite the hinges side)



ACCESSORIES

PROGRAMMER SELECTOR

DIG SEL02
Digital CAN selector
(Settings and working modes)



ROT SEL01
Mechanical CAN selector
(Working modes)



SENSORS

RAD6 Infrared sensor (safety on presence) L=360mm



RAD26 Infrared sensor (safety on presence) L=1026mm



RAD19 Microwave sensor. Unidirectional



PUL06 Touchless microwave sensor (activation)



PUSH BUTTONS

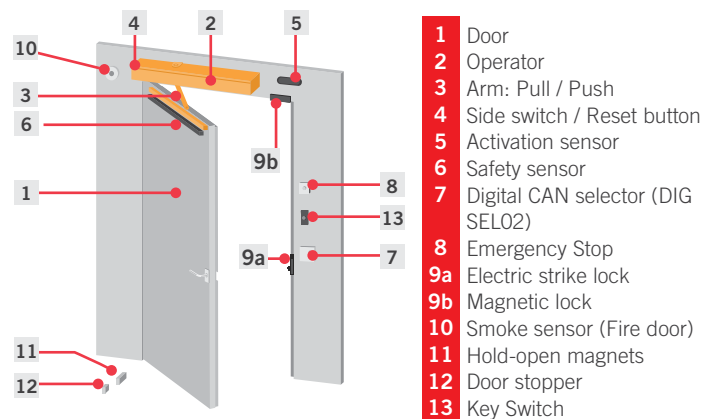
EMISOR6 - RECEPTOR6
Wireless push activation switch. Waterproof IP54



PUL03
Stainless Steel Push Pad



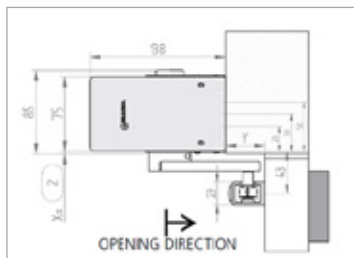
INSTALLATION LAYOUT



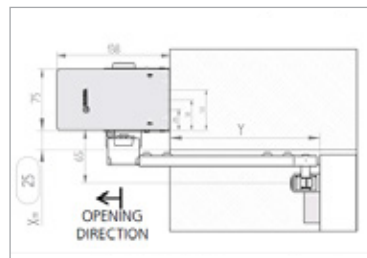
Pull slide arm APR01, Operator on the lintel (hinges side)



Pull slide arm APR01, Operator on the lintel (opposite the hinges side)



Push slide arm APR09 extension, Operator on the lintel (hinges side)



Push articulated arm APR02, Operator on the lintel (opposite the hinges side)

