

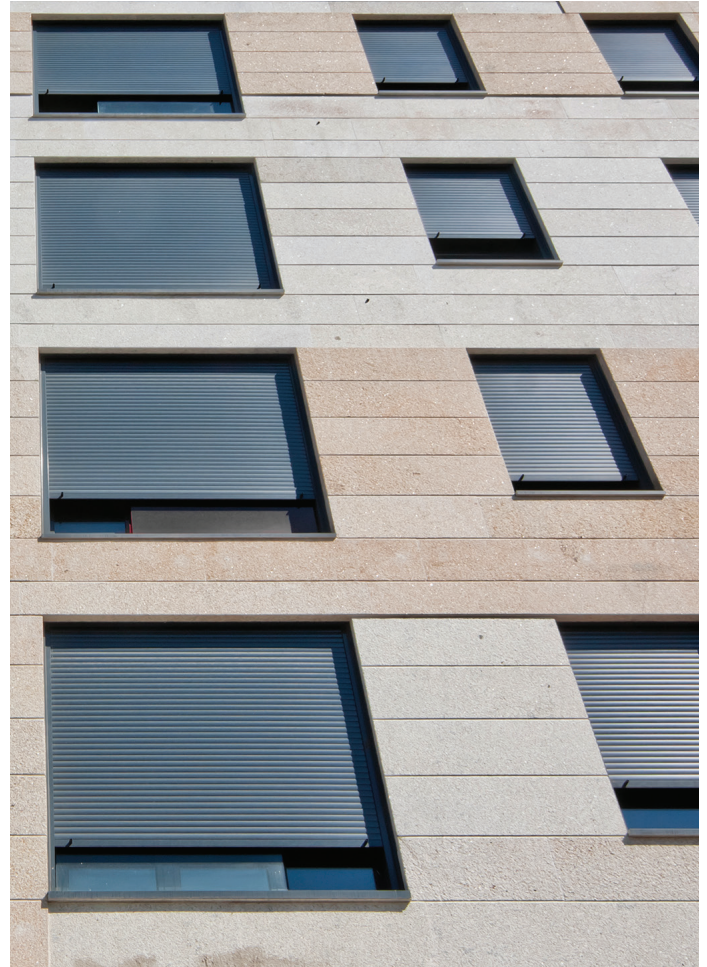
# SENA



## TUBULAR MOTOR

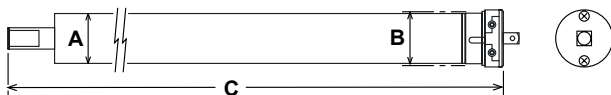
### Rolling Shutters

230 Vac tubular motor for rolling shutters up to 105 Kg, with mechanical limit switch. Model with manual override (CM)

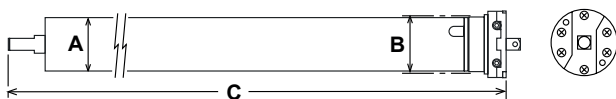


RESIDENTIAL

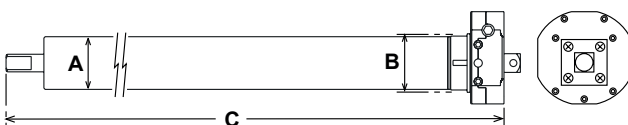
SENA-C Ø35



SENA-C Ø45



SENA-CM Ø45



SENA-C Ø35      SENA-C Ø45      SENA-CM Ø45

|   | SNC3512 | SNC4520 | SNC4530 | SNC4550 | SNCM4560 |
|---|---------|---------|---------|---------|----------|
| A | 35      | 45      | 45      | 45      | 45       |
| B | 37      | 56      | 56      | 56      | 78       |
| C | 524     | 460     | 460     | 590     | 625      |

# SENA

## TUBULAR MOTOR

### TECHNICAL DATA

|                              | SENA-C Ø35 |         | SENA-C Ø45 |         | SENA-CM Ø45 |
|------------------------------|------------|---------|------------|---------|-------------|
|                              | SNC3512    | SNC4520 | SNC4530    | SNC4550 | SNCM4560    |
| Maximum load* (kg)           | 30 *       | 35**    | 52**       | 95**    | 105**       |
| Torque (Nm)                  | 12         | 20      | 30         | 50      | 60          |
| Speed (rpm)                  | 17         | 17      | 15         | 12      | 12          |
| Power supply (Vac/Hz)        | 230/50     |         |            |         |             |
| Maximum electrical power (W) | 173        | 178     | 235        | 282     | 310         |
| Absorbed current (A)         | 0.75       | 0.78    | 1.03       | 1.23    | 1.35        |
| Maximum oper. time (min)     | 4          |         |            |         |             |
| Limit switch turns (n.)      | 42         | 26      | 26         | 26      | 15          |
| Length - L - (mm)            | 524        | 460     | 460        | 590     | 625         |
| Protection rating (IP)       | IP44       |         |            |         |             |

\* Value calculated with 40 mm octagonal roller

\*\* Value calculated with 60 mm octagonal roller

### SERIES

#### SENA-C Ø35

- Mechanical limit switch, easy to adjust and reliable over time.
- Compact and ultraquiet, ideal for indoor installation.
- Highly reduced dimensions, particularly suitable for installation in narrow spaces.
- 2.3 metres of cable connected to the motor.

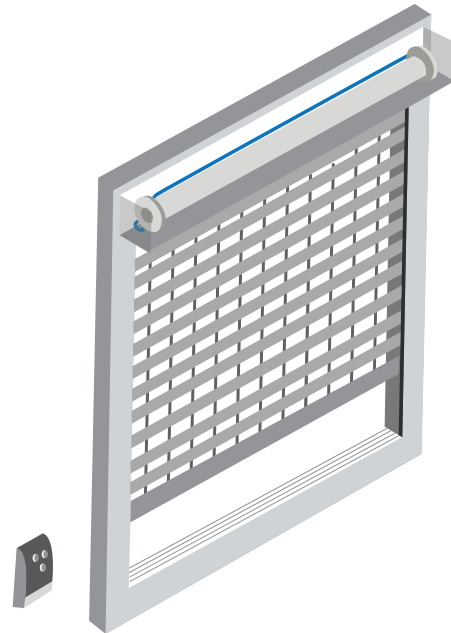
#### SENA-C Ø45

- Mechanical limit switch, easy to adjust and reliable over time.
- Compact head for easier installation.
- Bracket with quick coupling for easier fastening of the motor (accessory).
- 2.3 metres of cable connected to the motor.

#### SENA-CM Ø45

- Mechanical limit switch, easy to adjust and reliable over time.
- Emergency override mechanism to manually operate the awning or shutter in the event of electrical outage.
- 2.3 metres of cable connected to the motor.

### INSTALLATION LAYOUT



### COMMAND ELECTRONICS

| SN01G -SN04G- SN08G  | SNR11G  |
|--|---|
|  |   |
| Transmitter 433.92 MHz.<br>Available in 1-, 4- and 8-channel versions with LED display | Control board with built-in 433.92 MHz receiver (for SENA-C and SENA-CM models) |

### POWER CABLE



|              | SENA Ø35   | SENA Ø45 |
|--------------|------------|----------|
| Cable length | 2.3 m      |          |
|              | 4x0.35 mm2 |          |