

TEMIS



ELECTROMECHANICAL MOTOR

Swing Gates

Electromechanical linear motor for swing gates up to 200 kg and 2,2 m long.



RESIDENTIAL

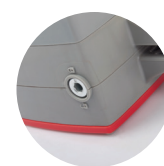
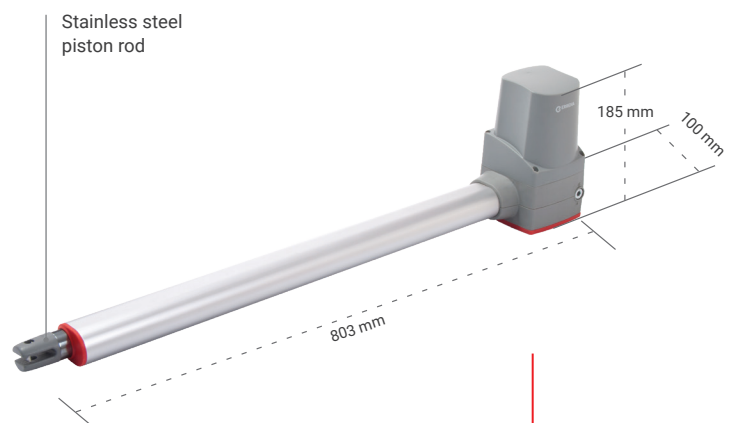
ACCURATE OPERATION WITH ENCODER

ELECTRONIC SOFT STOP

SAFETY. OBSTACLE DETECTION

EASY INSTALLATION WITH SCREWED
BRACKET

HOUSING FOR BATTERY BACK UP



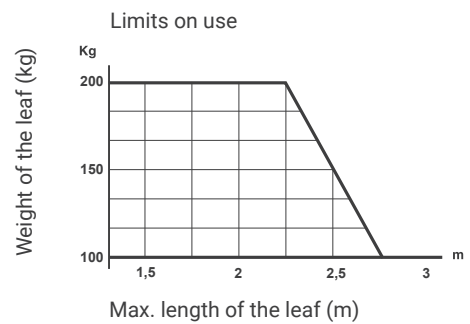
Practical key
unlocking system

TEMIS

ELECTROMECHANICAL MOTOR

TECHNICAL CHARACTERISTICS

	TES4324I	TES4324D
Power supply (Vdc)	24	
Power consumed (W)	60	
Absorbed current (A)	4.2	
Capacitor (µF)	-	
Maximum thrust (N)	2200	
Spindle speed (mm/s)	19.8	
Max travel (mm)	400	
Opening time 90° (s)	20	
Duty cycle	Intensive use	
Lock	Yes	
Limit switches	No	
Encoder	Yes	
Maximum opening angle	120°	
Protection level	IP44	
Operating temperature (°C)	-20/50	
Motor weight (kg)	3.4	
Packing dimensions (cm)	83x23x16	
Maximum length of the leaf (m)	2.2	
Maximum weight of the leaf (kg)	200	
Hand	Left	Right



Values for orientation purposes. The shape of the leaf and the presence of wind may bring notable differences in the values of the chart.

The use of electrolock is obligatory in unlocked models, and also in locked models when the leaves are over 1.8 m long.

UNIQUE KIT

MOTOR	CONTROL PANEL WITH RECEIVER		REMOTE CONTROL	PHOTOCELL		
	TES4324D	TES4324I	SMART-D201	IR02	FT06	
TEMIS18	24Vdc	•	•	•	••	•

INSTALLATION LAYOUT

