

# KAIROS



## ELECTROMECHANICAL LINEAR MOTOR

### Swing Gates

Electromechanical linear 24 Vdc motor for swing gates of 3 m and 400 kg or for gates of 4 m and 300 kg.



RESIDENTIAL



CONDOMINIUM

**ONE MODEL FOR BOTH LEFT AND RIGHT  
HAND**

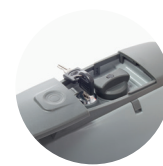
**GREAT PUSHING FORCE, 3000N**

**SAFETY. OBSTACLE DETECTION**

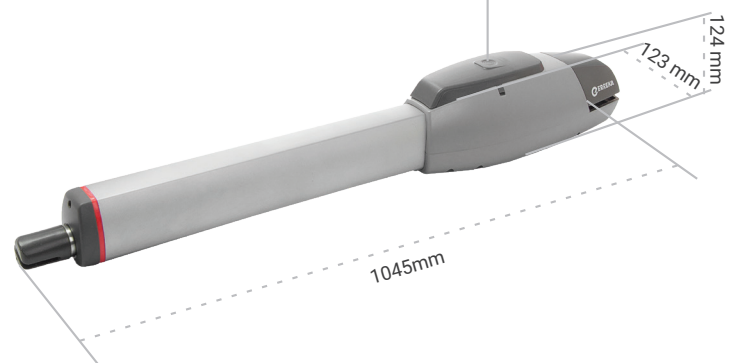
**ELECTROMECHANICAL LIMIT SWITCHES**

**ELECTRONIC SOFT STOP**

**HOUSING FOR BATTERY BACKUP**



Practical unlocking system  
with personalized key



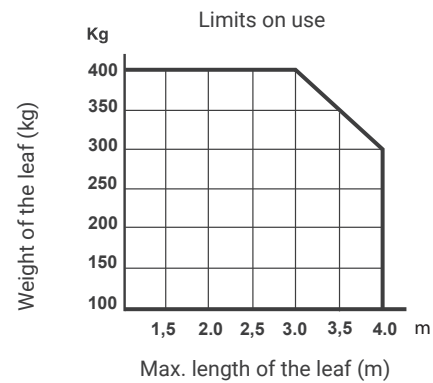
CONNECTED ACCESS |

# KAIROS

## ELECTROMECHANICAL LINEAR MOTOR

### TECHNICAL DATA

	KA4324C
Power supply (Vdc)	24
Power consumed (W)	144
Absorbed current (A)	5,5
Capacitor (µF)	-
Maximum thrust (N)	3000
Spindle speed (mm/s)	25,5
Max travel (mm)	506
Opening time 90° (s)	20
Duty cycle	Intensive use
Lock	Yes
Limit switches	Yes
Encoder	No
Maximum opening angle	120°
Protection level	IP44
Operating temperature (°C)	-20 / +50
Motor weight (kg)	6
Packing dimensions (cm)	112x30x27
Maximum length of the leaf (m) x Maximum weight of the leaf (kg)	3x400 / 4x300



Values for orientation purposes. The shape of the leaf and the presence of wind may bring notable differences in the values of the chart.

The use of electrolock is obligatory in unlocked models, and also in locked models when the leaves are over 1.8 m long.

### KITS RECOMENDADOS

		MOTOR	CONTROL PANEL WITH RECEIVER	REMOTE CONTROL	PHOTOCELL
KAIROS2	24Vdc	KA4324C	SMART-D201	IR02	FT06
		••	•	•	•

### INSTALLATION LAYOUT

