



Microwave Motion Sensor (HR50)

Instruction Manual HOTRON LTD.

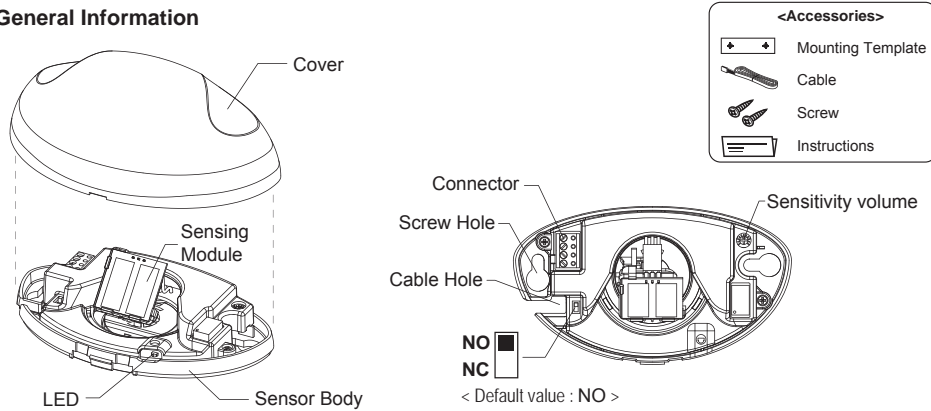
The HR50 is a high performance motion detection sensor specifically designed for the activation of automatic doors. For the safe and accurate use of this product, please read this instruction manual carefully.

1 Technical specifications

Power Supply : DC 12~30V, AC 12~24V
Product Size : 120mm x 70mm x 41.5mm (W x L x H)
Microwave Module : 24.125GHz
Hold Time : 1.2 Sec.
Detecting Field : 4m x 3m (W x D) (Height 2.2m)

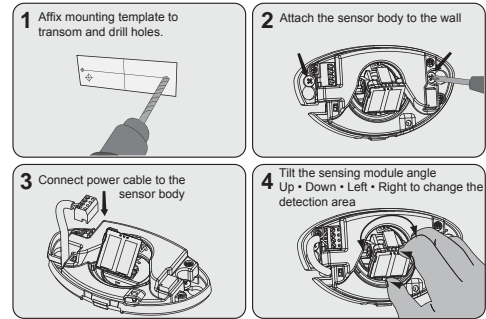
Current Consumption : < 1.4W
Contact Capacity : 0.5A/125VAC, 1A/24VDC
Max Install Height : 4.0m
Operating Temp/Humidity : -20°C~+60°C/0~90%
International Protection : IP54

2 General Information



3 Installation Guide

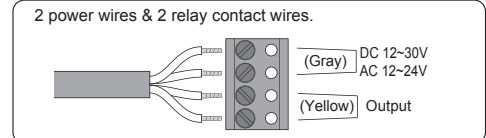
Do not supply power during installation. Do not disassemble or modify the device, it may cause fire or electric shock.



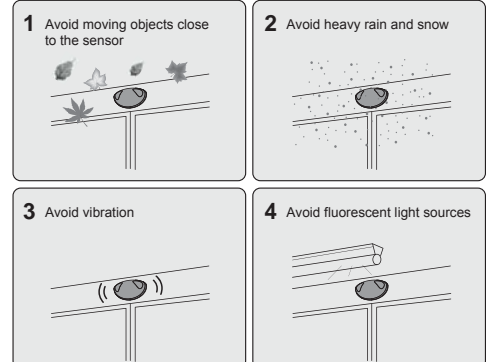
4 Sensitivity Adjustment



5 Wiring Diagram

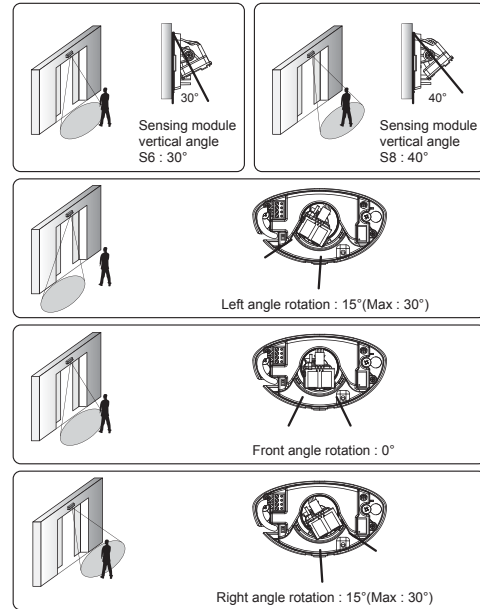


6 Mounting Information

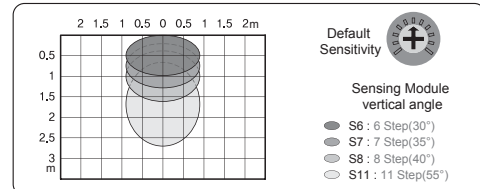


7 Detection Area Position Adjustment

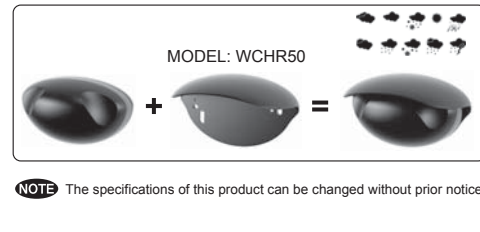
Adjust the Sensing module up and down to achieve a detection area close to or far from the door. Adjust the Sensing module to the right and left to achieve the desired side approach detection area.



8 Detection Field (Mounting Height : 2.2m)



9 Weather Cover (Sold Separately)



Sensore di movimento microonde (HR50)

Manuale di istruzioni HOTRON LTD.

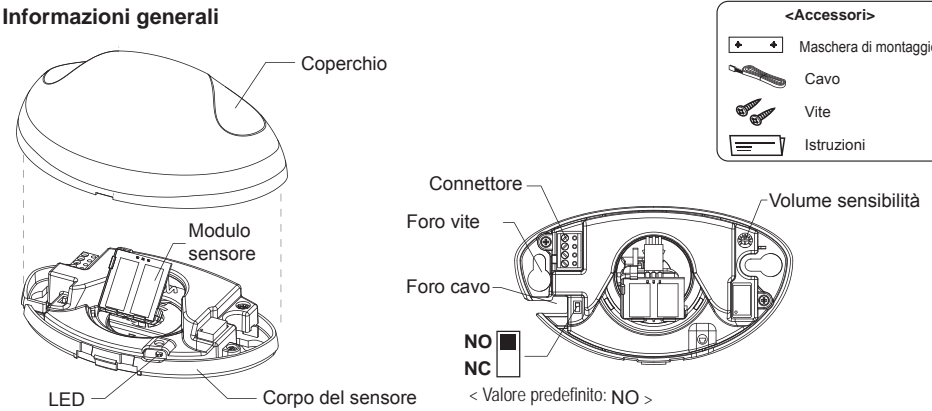
HR50 è un sensore di rilevamento di movimento ad elevate prestazioni progettato specificamente per l'attivazione delle porte automatiche. Per un uso sicuro e corretto del prodotto, si prega di leggere attentamente il presente manuale di istruzioni.

1 Specifiche tecniche

Alimentazione elettrica: 12~30 V CC, 12~24 V CA
Dimensioni del prodotto: 120 mm x 70 mm x 41,5 mm (Larg. x Lung. x Alt.)
Modulo microonde: 24,125 GHz
Tempo di mantenimento: 1,2 sec.
Campo di rilevamento: 4 m x 3 m (Larg. x Prof.) (Altezza 2,2 m)

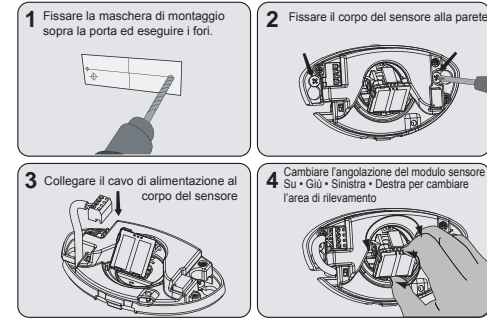
Consumo di potenza: < 1,4 W
Capacità di contatto: 0,5 A/125 V CA, 1 A/24 V CC
Altezza di installazione max.: 4,0 m
Temperatura/umidità di esercizio: -20°C~+60°C/0~90%
Protezione internazionale: IP54

2 Informazioni generali



3 Guida all'installazione

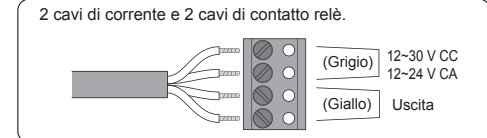
Non collegare all'alimentazione elettrica durante l'installazione. Non smontare o modificare il dispositivo, potrebbe causare incendi o scariche elettriche.



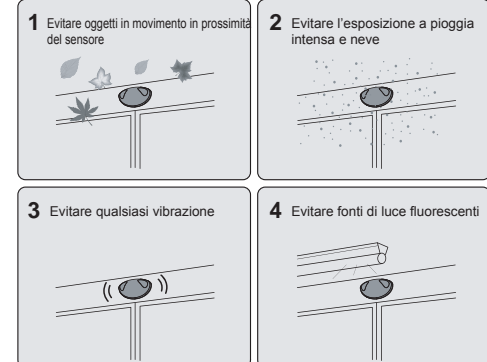
4 Regolazione della sensibilità



5 Schema di cablaggio

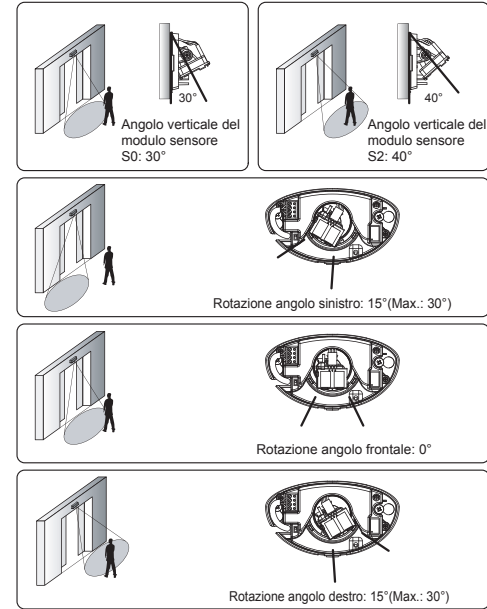


6 Informazioni di montaggio

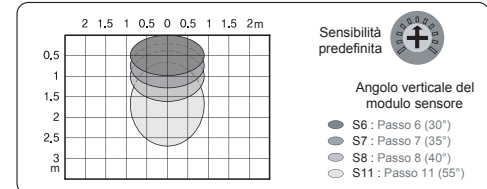


7 Regolazione della posizione dell'area di rilevamento

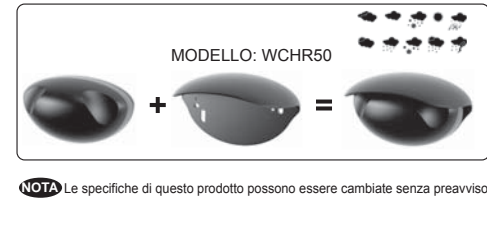
Regolare il modulo sensore in alto e in basso per raggiungere un'area di rilevamento vicina o lontana dalla porta. Regolare il modulo sensore a destra e a sinistra per raggiungere l'area di rilevamento laterale desiderata.



8 Campo di rilevamento (Altezza di montaggio: 2,2 m)



9 Copertura anti-intemperie (Venduta separatamente)



Sensor de movimiento por microondas (HR50)

Manual de instrucciones HOTRON LTD.

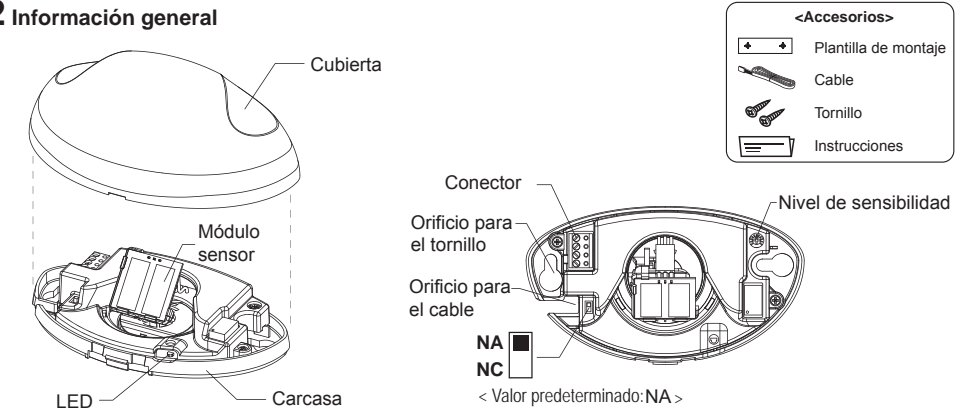
El HR50 es un sensor de detección de movimiento de alto rendimiento diseñado específicamente para la activación de puertas automáticas. Lea detenidamente este manual de instrucciones para utilizar el producto de manera correcta y segura.

1 Especificaciones técnicas

Alimentación eléctrica : 12~30V CC, 12~24V CA
Dimensiones del producto:120 mm x 70 mm x 41,5 mm (Ancho x Largo x Alto)
Módulo microondas: 24,125 GHz
Tiempo de espera: 1,2 s
Campo de detección: 4 m x 3 m (Ancho x Distancia) (Alteza 2,2 m)

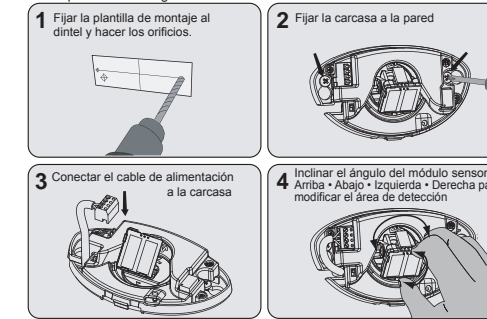
Consumo de energía: < 1,4 W
Capacidad de contacto: 0,5 A/125 V CA, 1 A/24 V CC
Alteza máxima de instalación: 4,0 m
Temperatura/Humedad de funcionamiento: -20 °C~+60 °C/0~90%
Grado de protección : IP54

2 Información general

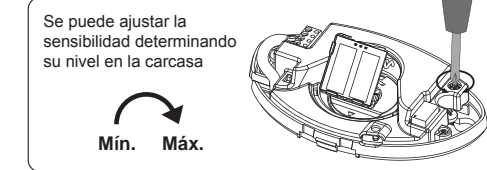


3 Guía de instalación

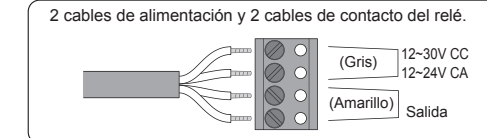
Desconecte el suministro eléctrico durante la instalación. No desmonte ni modifique el dispositivo, ya que podría incendiarse o provocar descargas eléctricas.



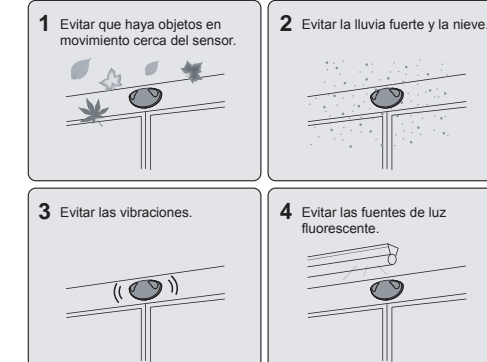
4 Ajuste de sensibilidad



5 Diagrama de cableado

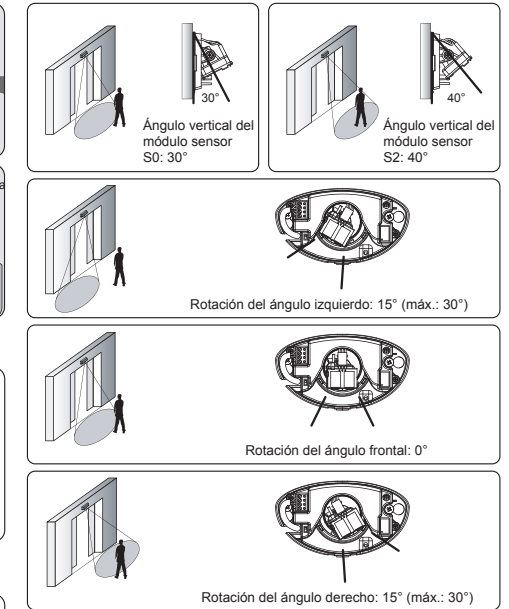


6 Información de montaje

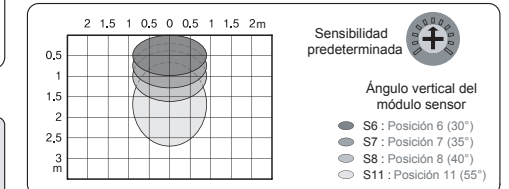


7 Ajuste de la posición del área de detección

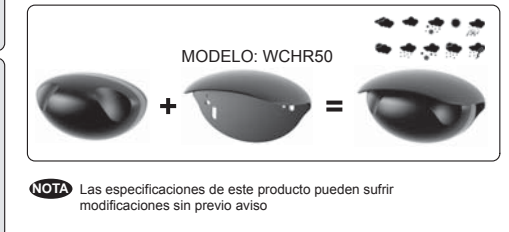
Ajuste el módulo sensor hacia arriba y hacia abajo para situar el área de detección cerca o lejos de la puerta. Ajuste el módulo sensor hacia la izquierda y la derecha para ubicar el área de detección en el lateral deseado.



8 Campo de detección (altura de montaje: 2,2 m)



9 Tapa de protección (se vende por separado)





Détecteur de Mouvement Haute Fréquence (HR50)

Manuel d'utilisation HOTRON LTD.

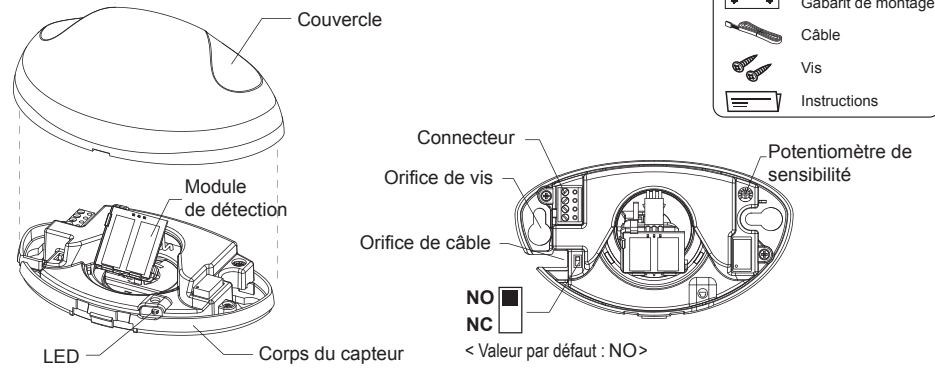
Le HR50 est un détecteur de mouvement haute performance spécifiquement conçu pour l'activation des portes automatiques. Pour que ce produit fonctionne de façon sûre et correcte, veuillez lire ce manuel d'utilisation attentivement.

1 Spécifications techniques

Alimentation électrique : CC 12~30V, CA 12~24V
Dimensions du produit : 120mm x 70mm x 41,5mm (Longueur x Largeur x Hauteur)
Module haute fréquence: 24.125GHz
Délai d'attente : 1,2 Sec.
Champ de détection : 4 m x 3 m (La x P) (Hauteur 2,2 m)

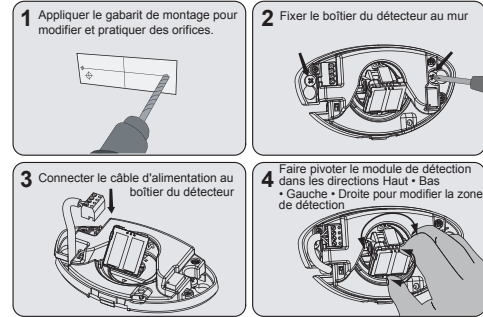
Consommation électrique : < 1,4W
Puissance contact : 0,5A / 125VCA, 1A / 24VCC
Hauteur maximale d'installation : 4,0 m
Température / Humidité : -20°C~+60°C / 0~90%
Protection internationale : IP54

2 Informations générales



3 Guide d'installation

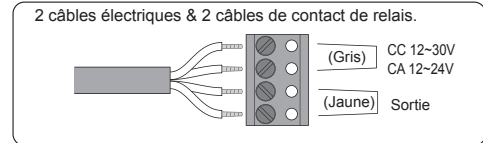
L'alimentation doit être éteinte durant l'installation. Ne pas démonter ou modifier l'appareil, cela peut entraîner un feu ou un choc électrique



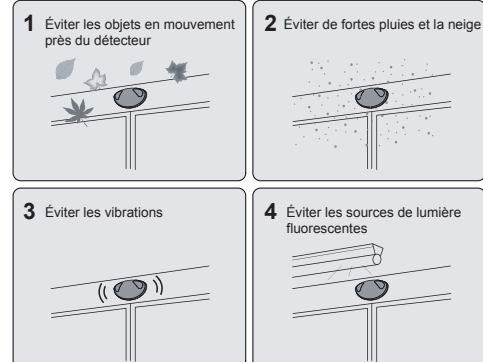
4 Réglage de la sensibilité



5 Schéma de câblage

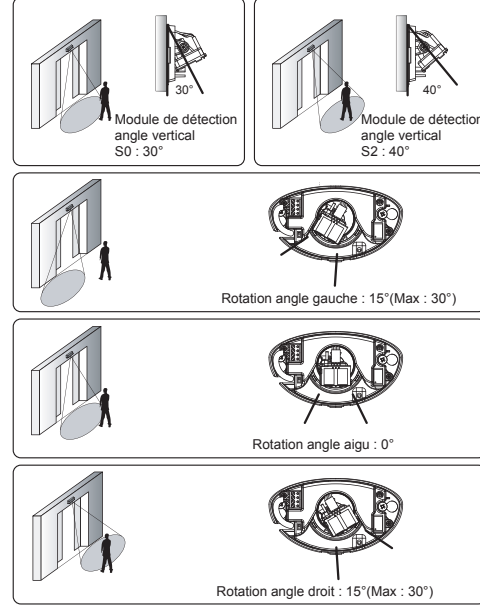


6 Informations de montage

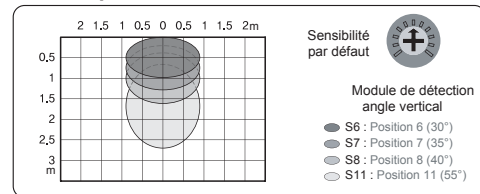


7 Ajustement de la position de la zone de détection

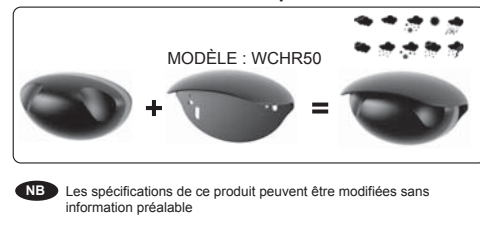
Ajuster le module de détection vers le haut ou vers le bas pour déterminer la proximité de la zone de détection par rapport à la porte. Ajuster le module de détection vers la gauche ou vers la droite pour obtenir la zone de détection latérale désirée.



8 Champ de détection (Hauteur de montage : 2,2 m)



9 Protection contre les intempéries (Vendue séparément)



Mikrowellen-Bewegungssensor (HR50)

Betriebsanleitung HOTRON LTD.

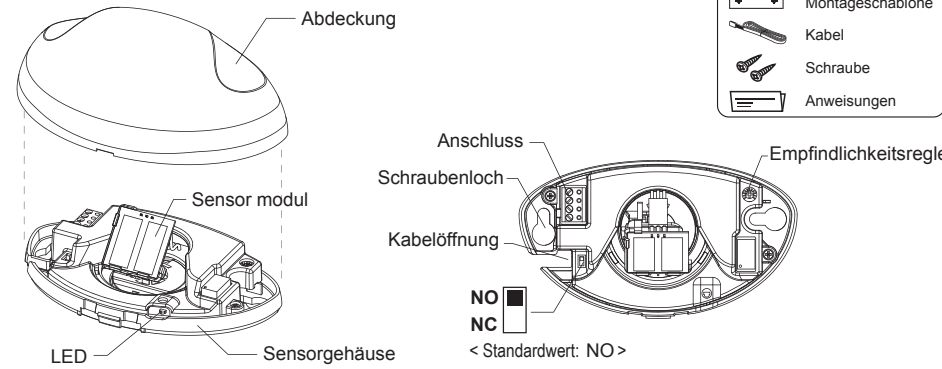
Der HR50 ist ein leistungsstarker Bewegungssensor, der speziell für die Aktivierung von Automatiktüren entworfen wurde. Lesen Sie bitte sorgfältig diese Betriebsanleitung, um einen sicheren und korrekten Gebrauch des Produktes zu gewährleisten.

1 Technische Daten

Stromversorgung : DC 12~30 V, AC 12~24 V
Produktabmessungen : 120 mm x 70 mm x 41,5 mm (L x B x H)
Mikrowellenmodul : 24,125 GHz
Haltezeit : 1,2 Sek.
Erfassungsbereich : 4 m x 3 m (B x T) (Höhe 2,2 m)

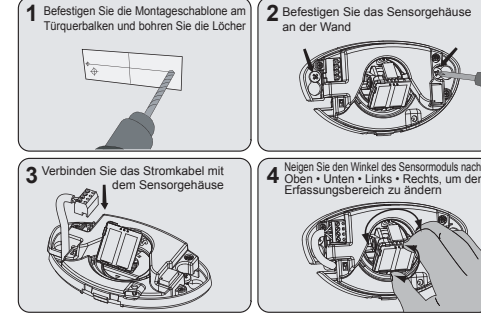
Leistungsaufnahme : < 1,4 W
Kontaktkapazität : 0,5A/125 V AC, 1A/24 V DC
Max. Einbauhöhe : 4,0 m
Temp./Feuchtigk. Betrieb : -20°C~+60°C/0~90%
Schutzklasse : IP54

2 Allgemeine Informationen

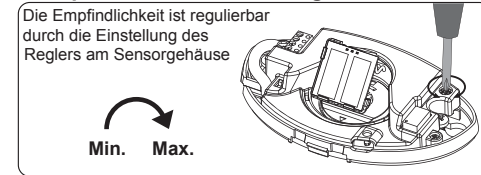


3 Installationsanleitung

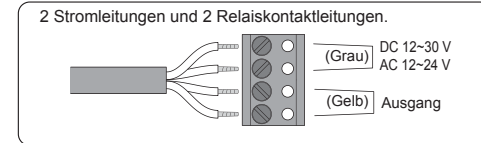
Während der Montage darf kein Strom anliegen. Das Gerät darf nicht verändert oder zerlegt werden, da sonst Brand- oder Stromschlaggefahr besteht.



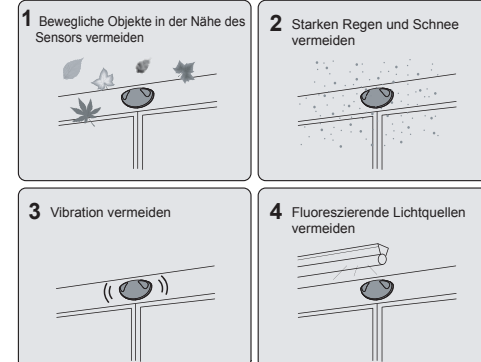
4 Empfindlichkeitseinstellung



5 Anschlussplan

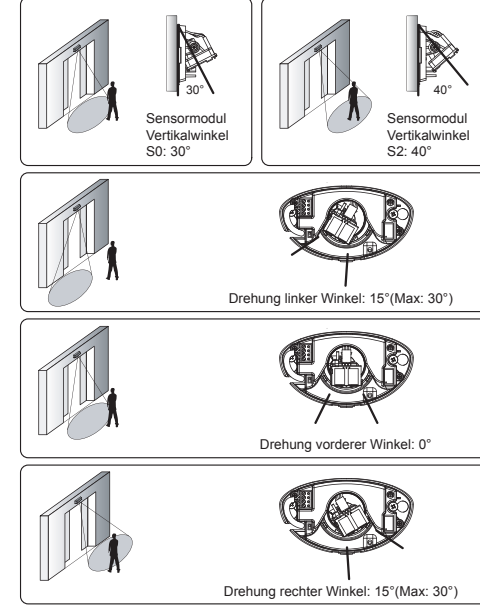


6 Informationen zur Montage

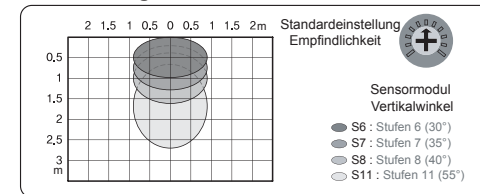


7 Einstellung des Erfassungsbereichs

Justieren Sie das Sensormodul nach oben oder unten, um einen Erfassungsbereich nahe oder fern von der Tür zu bekommen. Justieren Sie das Sensormodul nach rechts oder links um seitlich den gewünschten Bereich einzustellen.



8 Erfassungsbereich (Montagehöhe : 2,2 m)



9 Wetterschutz (Separat erhältlich)



Mikrodalga Hareket Sensörü (HR50)

Kullanma Kılavuzu HOTRON LTD.

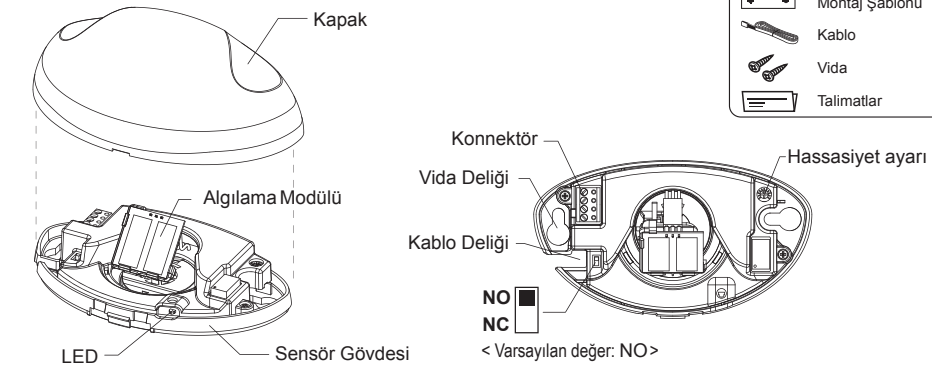
HR50 otomatik kapıların aktivasyonu için özel olarak tasarlanmış yüksek performanslı hareket algılama sensörüdür. Ürünün güvenli ve doğru kullanımı için lütfen bu kullanma kılavuzunu dikkatli bir şekilde okuyunuz.

1 Teknik özellikler

Güç Kaynağı : DC 12~30V, AC 12~24V
Ürün Ebadı : 120mm x 70mm x 41,5mm (G x B x Y)
Mikrodalga Modülü : 24.125GHz
Tutma Süresi : 1.2 Sn.
Tespit Alanı : 4m x 3m (G x D) (Yükseklik 2,2m)

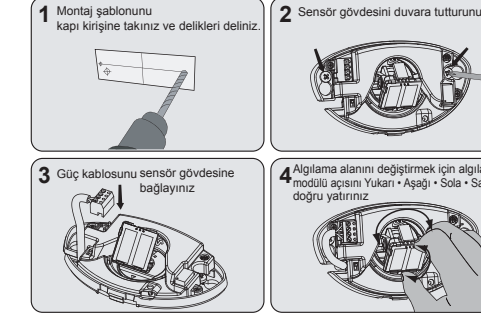
Güç tüketimi : < 1.4W
Kontak Kapasitesi : 0.5A/125VAC, 1A/24VDC
Maks. Kurulum Yüksekliği : 4,0m
Çalışma Sıcaklığı/Nem : -20°C~+60°C/0~90%
Uluslararası Koruma : IP54

2 Genel Bilgiler

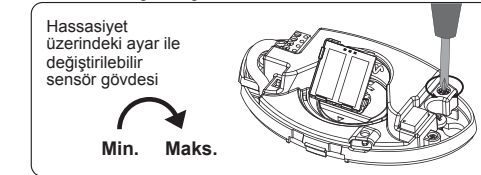


3 Kurulum Kılavuzu

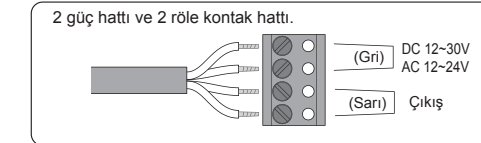
Kurulum esnasında güç beslemeyiniz. Cihazı demonte etmeyiniz veya değiştirmeyiniz, yangın veya elektrik çarpmasına neden olabilir



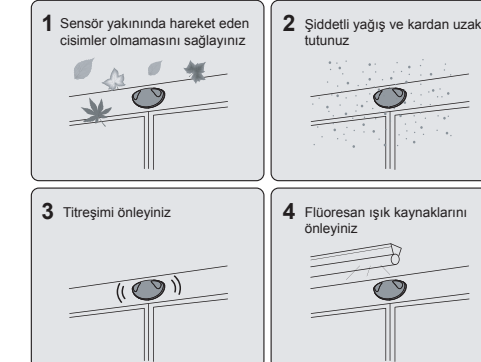
4 Hassasiyet Ayarı



5 Elektrik Şeması

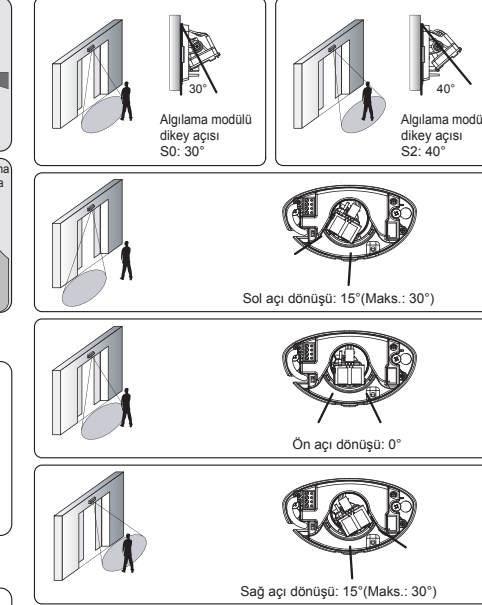


6 Montaj Bilgileri

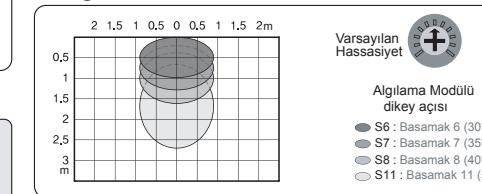


7 Algılama Alanı Pozisyon Ayarı

Kapıya yakın veya uzak bir algılama alanı elde etmek için Algılama modülünü yukarı ve aşağı doğru ayarlayınız. İstenen tarafı algılama alanına yaklaştırmak için Algılama modülünü sağa ve sola doğru ayarlayınız.



8 Algılama Alanı (Montaj Yüksekliği : 2,2m)



9 Hava Kapağı (Ayrıca Satılır)

