

TORO/ TORO INVERTER ELECTROMECHANICAL MOTOR



Sliding Gates

Electromechanical motor for sliding gates up to 2500 kg.

Inverter models available: Pushing force retained on slow down and allowing high duty cycle.

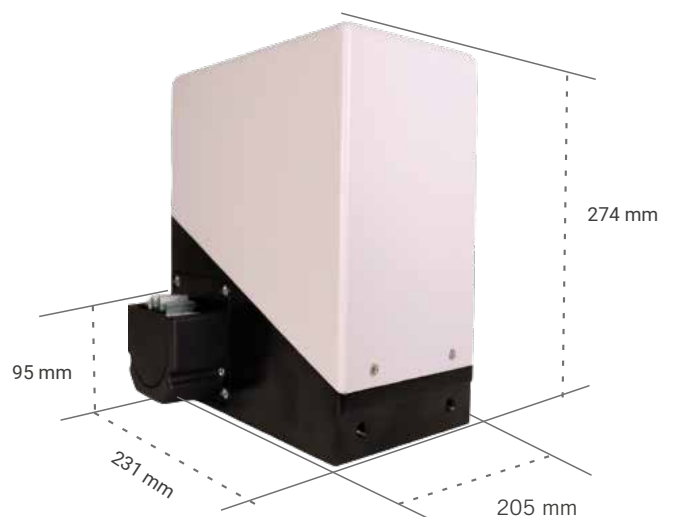


VERY HIGH DUTY CYCLE

MOTOR-REDUCER IN OIL BATH

ELECTRONIC SOFT START AND STOP

**PUSHING FORCE RETAINED ON SLOW
DOWN AND PROGRAMMABLE SPEED
IN INVERTER MODELS TO1810EIC AND
TO2500EIC**



INVERTER
control panel LCD
programming

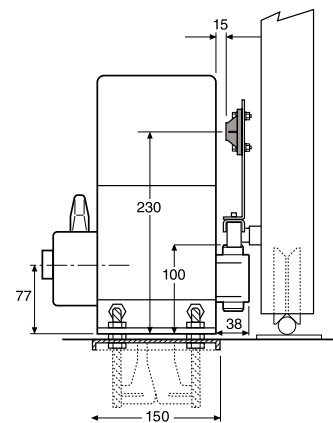


Practical unlocking
system with
personalized key

TORO/ TORO INVERTER ELECTROMECHANICAL MOTOR

TECHNICAL CHARACTERISTICS

	TO1810EC	TO1810EIC	KM2500	TO2500EIC
Power supply (Vac/Hz)	230/50	230/50-60	-	230/50-60
Power consumed (W)	604	600	875	800
Absorbed current	2,81	1,7	2,33	3,2
Capacitor (µF)	16-25	-	-	-
Motor voltage (Vac/Hz)	230/50	230/40-80	3x400/50	3x230/40-80
Torque (Nm)	45		70	60
Speed (m/min)	9	7,2-14,4	9	7,2/14,4
Lock	Yes			
Limit switches	Yes			
Encoder	No			
Pinion	M4-Z16			
Duty cycle	S3-60% (Cond. 16 µF) S3-35% (Cond. 25 µF)	S3-60%	S3-70%	
Protection level	IP55			
Operating temperature (°C)	-20/55			
Motor weight (kg)	18,7		18	18,7
Packing dimensions (cm)	28,5x25x31			
Maximum weight of the leaf (kg)	1200 (Cond. 16µF) 1800 (Cond. 25µF)	1800	2500	



Assembly levels

RECOMMENDED KITS

	MOTOR	CONTROL PANEL	RECEIVER	REMOTE CONTROL	PHOTOCELL	FLASHING LAMP		
	TO1810EC	TO1810EIC	KM2500	VIVO-T101	IRRE2-250	IR02	FT06	LUMI
TORO44	•				•	••	•	
TORO45	•				•	••	•	•
TORO16		•			•	••	•	
TORO17		•			•	••	•	•
TORO11			•	•	•	••	•	
TORO33			•	•	•	••	•	•

INSTALLATION LAYOUT

